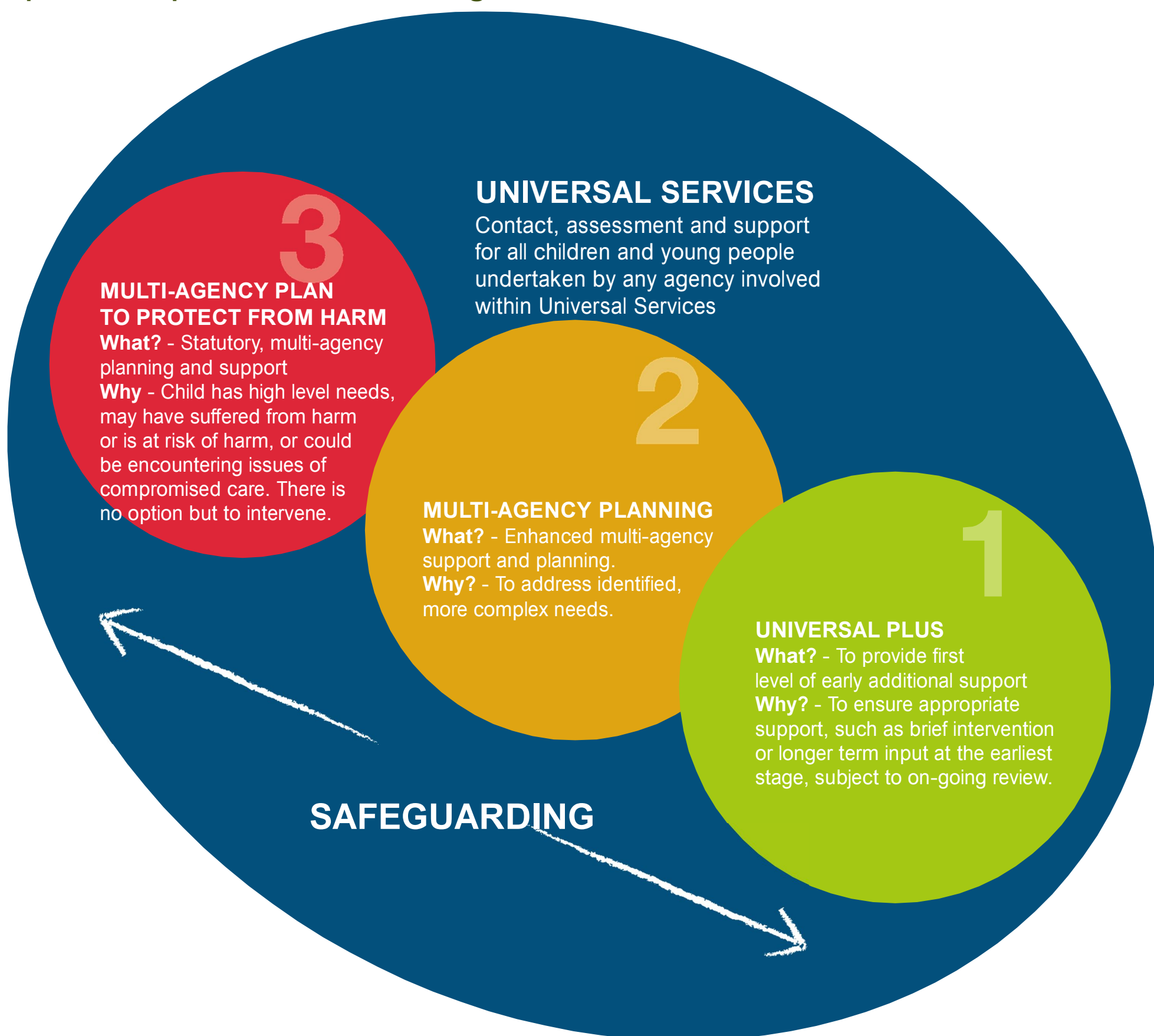


Halton Levels of Need Framework

The Halton Levels of Need Framework aims to support agencies to meet the needs of children, young people and their families to ensure the best possible outcomes. It aims to assist practitioners and managers in assessing and identifying a child's level of additional needs and how best to respond in order to meet those needs as early as possible to prevent needs escalating further.



For more information please contact Children and Young People Policy Team
cypolicy@halton.gov.uk