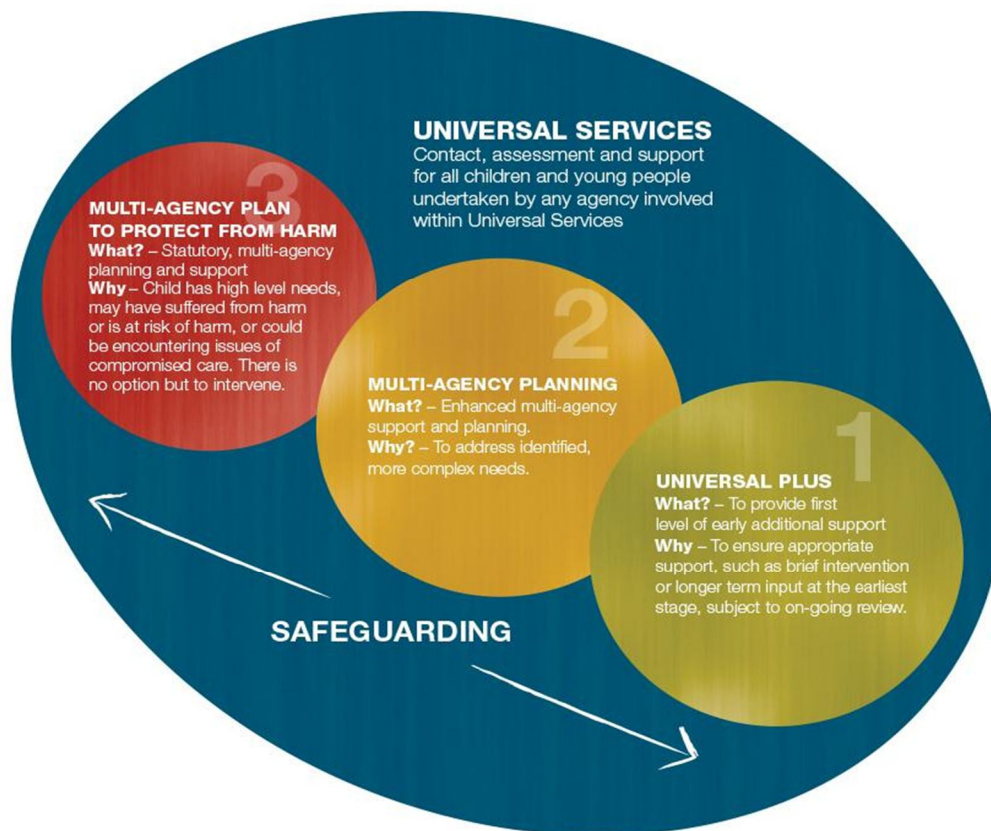


The Halton Levels of Need Framework aims to support agencies to meet the needs of children, young people and their families to ensure the best possible outcomes. It aims to assist practitioners and managers in assessing and identifying a child's level of additional needs and how best to respond in order to meet those needs as early as possible to prevent needs escalating further.

The Framework sets out three levels of additional needs above Universal Services that captures the full range of additional needs as they present. Universal Services remain at the heart of all work with children, young people and their families and are in place for all whether additional needs present themselves or not. The fundamental relationship between Universal Services and the three levels of additional needs is captured in the diagram below:



What this might mean for Inclusion

Level 1

- Family support, peer mentoring to resolve families' issues at the earliest stage.

Level 2

- The behaviour of children and young people impacts on educational engagement
- Children/young people persistently absent from school

Level 3

- Children/young people missing from education
- Children/young people with health needs that prevents regular school attendance and requires statutory provision of alternative education.

For more information please contact the Children and Young People Policy Team
cypolicy@halton.gov.uk